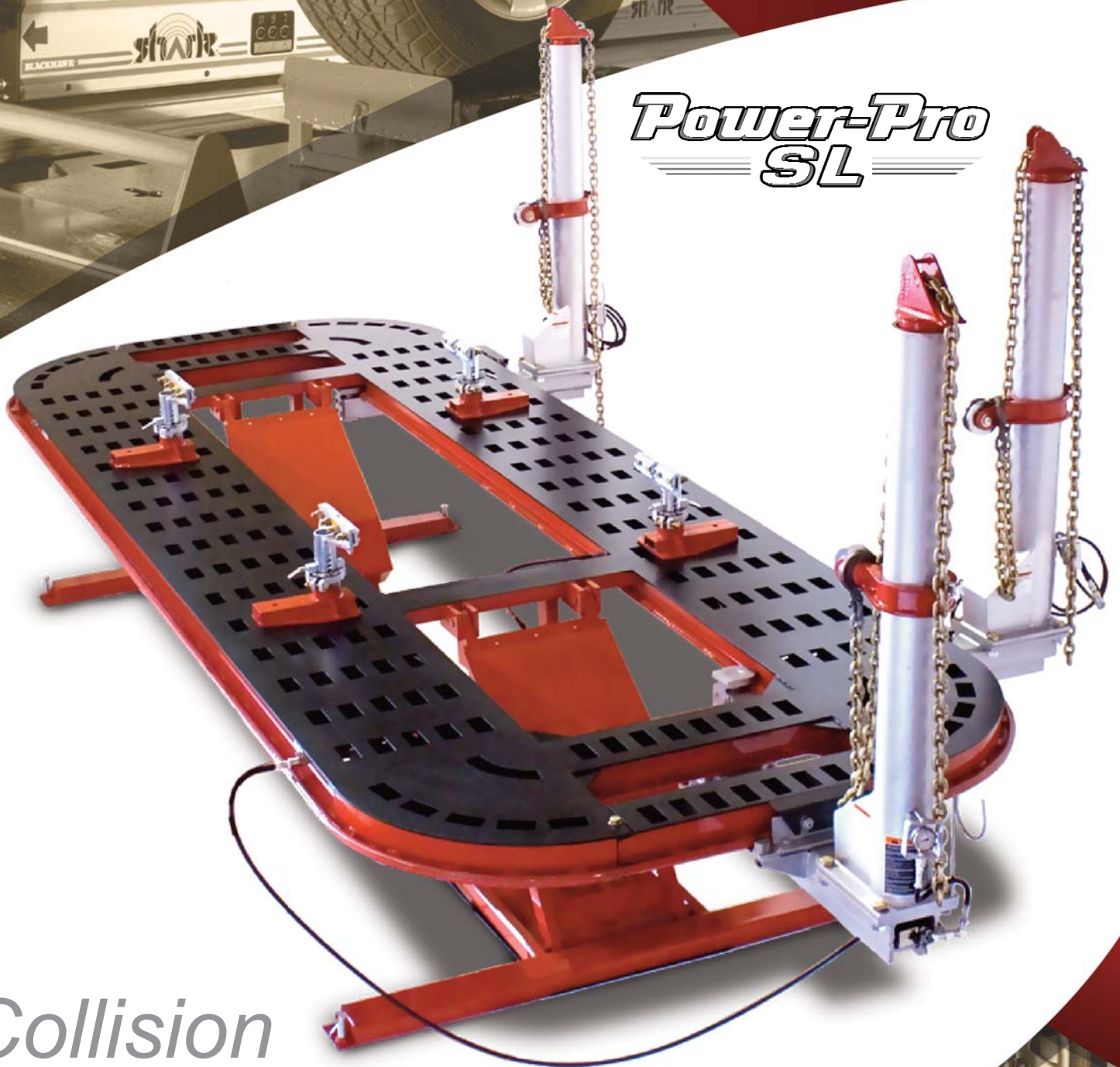


**BLACKHAWK**

*Power-Pro  
SL*



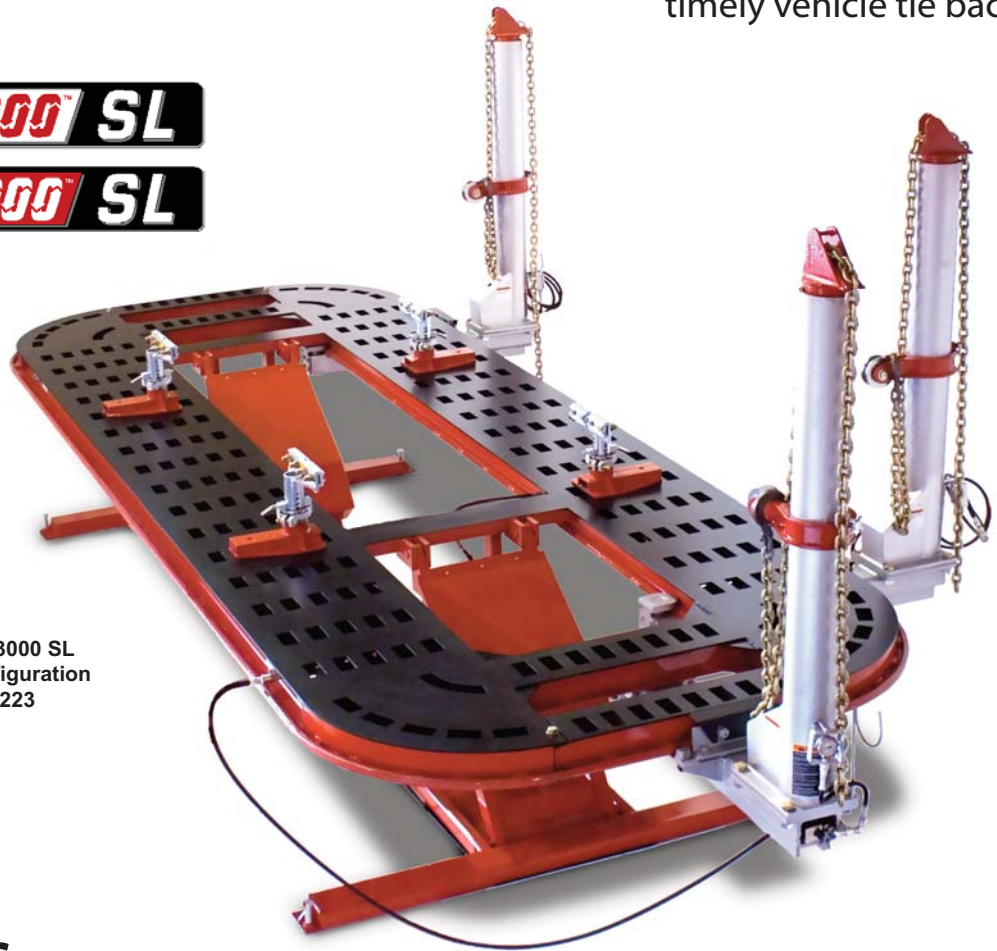
*Collision  
Frameracks*

## Power & Performance

The Power-Pro SL series of racks offer a feature set which customers have embraced in today's collision repair rack market place. It has an extended-height lifting capability for ergonomic working heights, an open front and rear for greater accessibility to the vehicle for repairs, a faster pinch-weld anchoring system with fewer bolts to secure it to the rack platform and 60% more chain tie-downs for efficient and timely vehicle tie backs.

**Power-Pro® 2000™ SL**

**Power-Pro® 3000™ SL**



Power-Pro 3000 SL  
3-Tower Configuration  
BH9014223

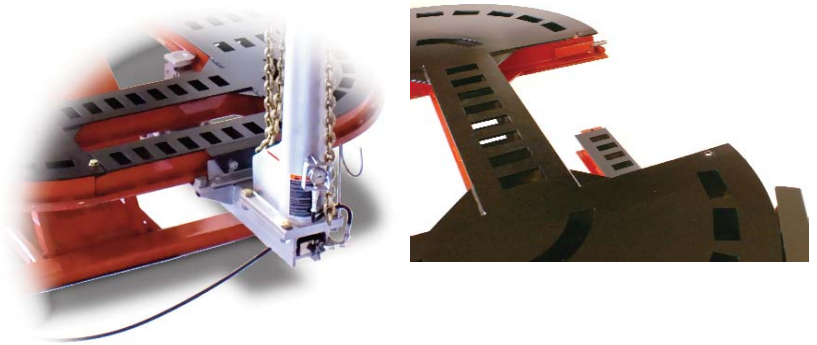
## Specifications

	Power-Pro 2000 SL	Power-Pro 3000 SL
Rack Length:	20'	22'
Rack Max. Length (with towers):	24' 1"	26' 1"
Width of Rack:	88"	88"
Width of Rack (with towers):	11' 4"	11' 4"
Width of Treadway:	26 ½"	26 ½"
Center Opening Width:	35 ½"	35 ½"
Overall Height (towers down):	9' 1"	9' 1"
Overall Height (towers extended):	9' 11"	9' 11"
Tie-Downs:	222	244
8 Working Heights:	12" up to 42"	12" up to 42"
Power Requirement:	120V, 1Ph, 60Hz	120V, 1Ph, 60Hz

# Collision Repair Solutions That Help You P

## Front and Rear Removable Cross-Members

Perform a front-end pull removing mash, and then remove the cross-member to gain unrestricted access to the vehicle.



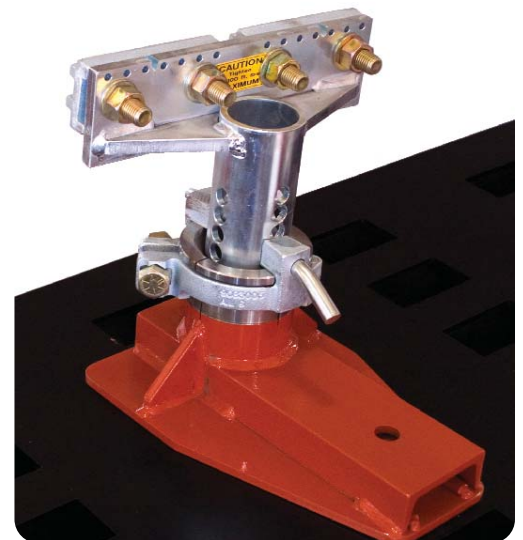
## Electric-Hydraulic Couplers

Eight quick-connect electric-hydraulic couplers are conveniently located around the rack for efficient tower connections or for auxiliary hydraulic repair accessories. The couplers provide for a positive seal and allow for a safe, clean operating environment for your technicians.



## Infinite Positioning of Pull Collars

Variable-position pull collars provide for unlimited positioning for the correct alignment with the pull being made. Water-filled pressure gauges can be adjusted to provide the technician with the best line of sight when making 10 ton pulls at the hook.



## Pinch-Weld Clamp

Pinch-Weld Clamp base secures to the rack with a single bolt reducing your vehicle set-up times.

# Profit Today And Prepare For Tomorrow.



## Electric Pump

Elevated off of the ground and placed in a sound-proof metal enclosure with a push-button lock release located on top. Remote easily stores inside the enclosure when not in use.

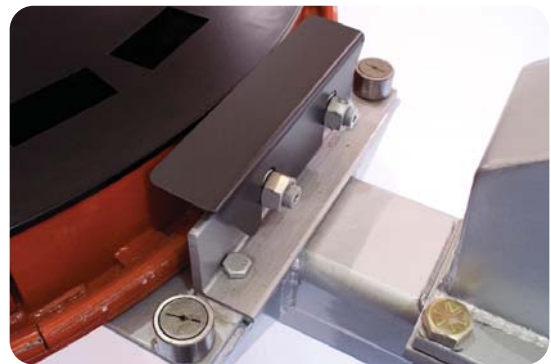
## Light-Weight Steel Ramps

For loading & off-loading the vehicle from the front or rear of the rack.



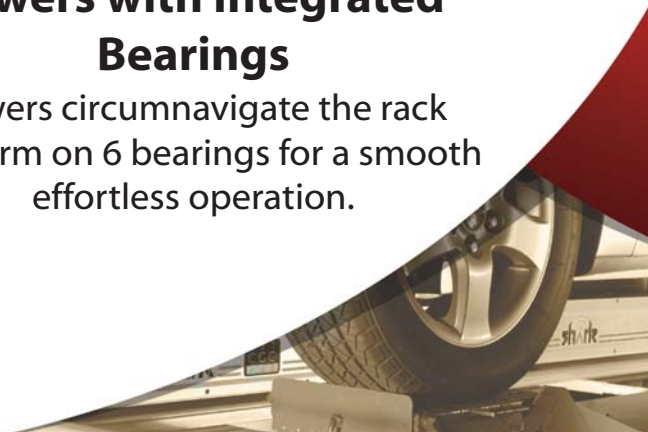
## Working Heights

Eight working heights from 12" to 42" provide for one of the lowest working heights in the market. Adjustable working heights provide flexibility in properly positioning the vehicle at an optimum working height for ultimate productivity boosts!



## Towers with Integrated Bearings

Towers circumnavigate the rack platform on 6 bearings for a smooth effortless operation.

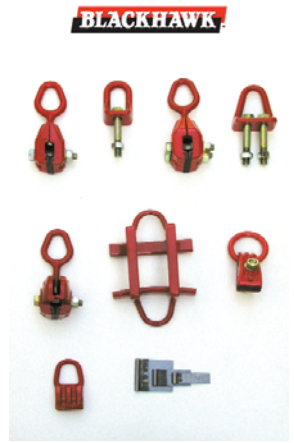


## Optional Accessories

### Standard Accessory Kit

A1710102

**Set Includes:** 1 Self-Tightening Pull Clamp (Single-Bolt), 1 Side Pull Bracket (Single-Bolt), 1 Self-Tightening Pull Clamp (Double-Bolt), 1 Side Pull Bracket (Double-Bolt), 1 Self-Tightening/Multi-Angle Pull Clamp, 1 Small Fender Puller (Uneven Bars), 1 Self-Tightening O-Ring Pull Clamp, 1 Tac Clamp, 1 Tac Clamp Plate (3"), 1 Tac Clamp Plate (2"), 1 Tac Clamp Plate (1"), and Silhouette Tool Board



### Deluxe Accessory Kit

A1710103

**Set Includes:** All Standard Accessories (Listed Above), 1 McPherson Universal Strong Pulls (15 pieces), 1 Pulling Hook (Modular Assembly), 1 Pulling Hook Plate, 1 Frame Horn Plate, 1 Nylon Strap, 1 Cable Sling, 1 Pull Adapter (Regular Pull - Single Loop), 1 Pull Adapter (Regular Pull - Axial Pull), 4 Edge Clamps (Universal), and Silhouette Tool Board

### Truck Tie-Down Board

9020026



### Vehicle Loading Package

9020030 (Includes: Wench, Wheel Stands, Car Dollies, and 2 Bag Air Jack)



## Features and Benefits

### Light-weight Drive-on/Drive-off Ramps

Provide drive-through capability

### From 222 to 244 Tie-Downs

Efficient and timely vehicle tie-back, just drop the chain through deck and secure

### Front & Rear Removable Cross-Members

Gain complete access to vehicle for repairs

### Front & Rear Wheel Chocks

Prevents forward and backward movement of the vehicle

### Leak-Free Quick-Connect Hydraulic Couplers

Allowing for a safe and clean work space

### One-Bolt Pinch-Weld Base Clamping

Reduces vehicle setup time

### Infinite-Positioning of Pull Collars

For the correct alignment of the pulls

### 9,900 lbs. Lifting Capacity

Lift the heaviest of vehicles

### Specialty & Frame Anchoring Options

For BMW, Mercedes, Honda & frame vehicles



# Power-Pro SL

## Available Configurations

	Part Number	Number of Towers	Shipping Weight
Power-Pro 2000 SL	BH9014202	2	6,200 lbs.
Power-Pro 2000 SL	BH9014203	3	6,800 lbs.
Power-Pro 2000 SL	BH9014204	4	7,400 lbs.
Power-Pro 3000 SL	BH9014222	2	6,620 lbs.
Power-Pro 3000 SL	BH9014223	3	7,220 lbs.
Power-Pro 3000 SL	BH9014224	4	7,820 lbs.